



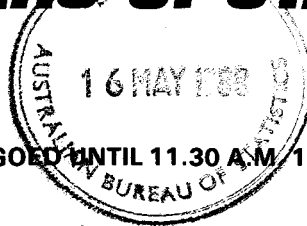
AUSTRALIAN BUREAU OF STATISTICS

Canberra

CS
38-479
940

CATALOGUE NO. 8635.0

EMBARGOED UNTIL 11.30 A.M. 16 MAY 1988



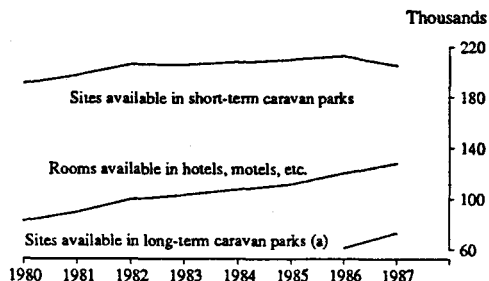
AUS.
B

TOURIST ACCOMMODATION, AUSTRALIA, DECEMBER QUARTER 1987

- PHONE INQUIRIES** • *about these statistics*—contact Andy Harris on Canberra (062) 52 5445 or any ABS State office.
 • *about other statistics and ABS services*—contact Information Services on Canberra (062) 52 6627, 52 5402, 52 6007 or any ABS State office.
- MAIL INQUIRIES** • *write to Information Services, ABS, P.O. Box 10, Belconnen, A.C.T. 2616 or any ABS State office.*
- ELECTRONIC SERVICES** • on VIATEL — key *656#. • on AUSSTATS — phone (062) 52 6017.
 • on TELESTATS — phone (062) 52 5404.

MAIN FEATURES

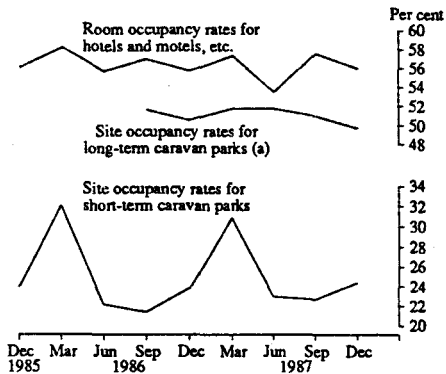
CHART 1: CAPACITY OF TOURIST ACCOMMODATION ESTABLISHMENTS, DECEMBER QUARTER EACH YEAR



At the end of the December quarter 1987, there were 128,100 rooms available in hotels, motels, etc. with facilities, which is an increase of 6.7% compared with the same quarter last year (120,081 rooms).

There were 205,328 sites available in short-term caravan parks at the end of the December quarter 1987. This is a reduction of 3.5% compared with the same quarter in the previous year (212,844 sites) whilst sites available in long-term caravan parks increased by 18.5% from 61,538 sites in December 1986 to 72,988 sites in December 1987.

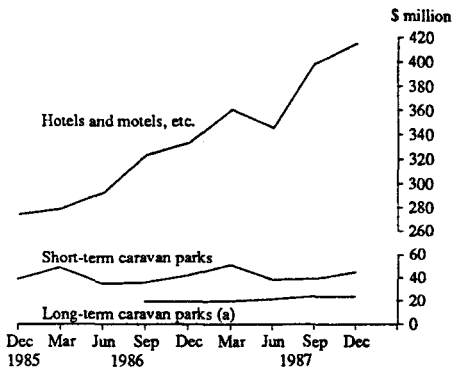
CHART 2: OCCUPANCY RATES



The room occupancy rate for hotels, motels, etc. with facilities was 56.0% for the December quarter 1987 (compared with 55.8% for the December quarter 1986).

The site occupancy rate for short-term caravan parks for the December quarter 1987 was 24.4% (compared with 23.8% for the December quarter 1986). For long-term caravan parks, the site occupancy rate for the December quarter 1987 was 49.7% (compared with 50.6% for the December quarter 1986).

CHART 3: TAKINGS FROM ACCOMMODATION



Takings from accommodation for hotels, motels, etc. with facilities for the December quarter 1987 were \$415 million, which is an increase of 24.4% compared with the same quarter last year (\$334 million). The average length of stay for guests in hotels, motels, etc. with facilities during the December quarter 1987 was 2.0 days.

Accommodation takings for short-term caravan parks for the December quarter 1987 were \$45 million, an increase of 7.8% compared with \$42 million for the December quarter 1986. Accommodation takings for long-term caravan parks for the December quarter 1987 were \$24 million, an increase of 24.0% compared with \$19 million for the December quarter 1986.

(a) Data only available from September quarter 1986.

EXPLANATORY NOTES

Introduction

This publication contains results, for Australia and each State and Territory, of the quarterly surveys of tourist accommodation establishments.

Scope and Coverage

2. Up to the June quarter 1986 survey a tourist accommodation establishment was defined, for the purpose of the survey, as an establishment which predominantly provides short-term accommodation (i.e. for periods of less than 2 months) available to the general public. Commencing with the September Quarter 1986 survey the definition was extended to include all caravan parks (whether predominantly providing short-term or long-term accommodation). This change has been made because predominantly long-term caravan parks also provide a significant number of sites for short-term accommodation.

3. Commencing with September quarter 1987, the scope of the tourist accommodation survey has been expanded to include holiday flats, units and houses available to the general public for short-term accommodation. Release of results from this expanded collection will be deferred until the ABS is satisfied with the validity of the data for all States and Territories.

4. Tourist accommodation establishments currently included in the survey are:

- (a) *Licensed hotel with facilities.* An accommodation establishment which is licensed to operate a public bar, provides a bath or shower and toilet in most guest rooms, and has breakfast available for guests.
- (b) *Motel, licensed or unlicensed, private hotel or guest house with facilities.* An accommodation establishment which provides a bath or shower and toilet in most guest rooms and has breakfast available for guests but is not licensed to operate a public bar. This category also includes motels that are licensed to serve liquor with meals.
- (c) *Caravan park.* An accommodation establishment which provides powered sites for caravans and toilet, shower and laundry facilities for residents. A *short-term caravan park* is one which is predominantly occupied by short-term residents (i.e. guests staying for less than 2 months). A *long-term caravan park* is one predominantly occupied by long-term guests (i.e. residents staying for 2 months or more).
- (d) *Holiday flats, units and houses.* Flats, units and houses which are available to the general public for short-term accommodation (i.e. for periods of less than 2 months) and are operated either by owners or managers who have sole letting rights to at least 5 flats, units or houses or by real estate agents for short-term letting, where the majority of such flats, units or houses are self-contained in terms of cooking, bath (or shower) and toilet facilities and do not have breakfast available for guests. (See paragraph 3 above regarding availability of statistics on this category of tourist accommodation establishments.)

Note that data collected and published for each type of establishment include both long term and short term residents at these establishments.

Definitions

5. *Number of establishments* refers to the number of tourist accommodation establishments within the scope of the survey which operated during the survey period. Included are those establishments which operated for any part of the quarter or which closed temporarily for the quarter because of seasonal reasons. Establishments comprising more than one type of accommodation activity referred to in paragraph 3 above (e.g. a motel with attached caravan park) are treated as two separate establishments.

6. *Guest rooms* refers to the maximum number of rooms, units, suites, etc. available for accommodating paying guests at hotels and motels with facilities during the survey period.

7. *Bed spaces* refers to the maximum number of bed spaces (excluding cots) available to accommodate paying guests at hotels and motels with facilities during the survey period. Three-quarter beds are classified as single beds; double beds are counted as two bed spaces.

8. *Guest arrivals* refers to the total number of paying guests counted on the first night they stayed at the accommodation establishment during the survey period.

9. *Room nights* refers to the total number of nights each guest room is occupied by a paying guest during the survey period.

10. *Guest nights* refers to the total number of nights each paying guest stayed during the survey period.

11. *Room occupancy rate* refers to the proportion of guest rooms occupied to the number of guest rooms available during the survey period expressed as a percentage.

12. *Bed occupancy rate* refers to the proportion of bed spaces occupied to the number of bed spaces available during the survey period expressed as a percentage.

13. *Average length of stay* refers to the number of guest nights divided by the number of guest arrivals expressed as a number of days.

14. *Powered sites* refers to the maximum number of sites with provision for connection to electric power supply which are available at caravan parks for accommodating paying guests during the survey period. Included are powered sites occupied by on-site vans.

15. *Unpowered sites* refers to the maximum number of sites with no provision for connection to electric power supply which are available at caravan parks for accommodating paying guests during the survey period.

16. *Cabins, flats, etc.* refers to the maximum number of cabins, flats, units and villas which are available at caravan parks for accommodating paying guests during the survey period.

17. *Site nights* refers to the total number of nights each powered/unpowered site, cabin, flat, etc. is occupied by a paying guest during the survey period.

18. *Sites occupied by long term residents* refers to the total number of sites occupied by long term residents (i.e. guests who have stayed continuously for 2 months or more) at the end of the survey period.

19. *Site occupancy rate* refers to the proportion of site nights to the total caravan park capacity available during the survey period expressed as a percentage. Unoccupied vans are treated as vacant sites.

20. *Takings from accommodation* refers to revenue received from the provision of short term and long term accommodation at tourist accommodation establishments. Takings from meals are excluded. Takings from accommodation for each month represent the takings received during that month. Where payments are received in advance of, or after, the provision of accommodation to guests, the monthly figure for takings from accommodation may not necessarily bear a direct relationship to the number of guests accommodated during the month. Rental and storage fees paid to caravan parks for the keeping of private vans in parks are included in the takings of the month they are received.

21. *Star grading* refers to the grading of hotels and motels with facilities and is based on the classification system used by members of the Australian Automobile Association (AAA) and the Licensing Court of Western Australia. The gradings are allocated according to a points system based on the amenities and facilities available to guests. Details of the grading scheme are contained in the RACV-RAASA members' publication "Australian National Tourguide", or the individual tour guides produced by members of the AAA.

22. *Employment*. Details of the numbers of persons working at tourist accommodation establishments (including those working on other than accommodation activities) have not been included in this publication. However, data are available upon request from the ABS.

Related publications

23. Publications for Australia, and each State and Territory, are released by the respective offices of the ABS. Tourist accommodation statistics for past quarters are available in earlier publications commencing with the September quarter 1975. These and some unpublished

statistics for certain small areas within States (e.g. local government areas or combinations of local government areas) are available upon request. From September quarter 1980 a dissection of the statistics shown in this publication, according to size of establishment, is available on request for each State (Territories excluded).

24. Users may also wish to refer to the following publication which is available on request:

Selected Accommodation Establishments, Australia, 1984-85 (8636.0)

25. Current publications produced by the ABS are listed in the *Catalogue of Publications, Australia* (1101.0). The ABS also issues on Tuesdays and Fridays, a *Publications Advice* (1105.0) which lists publications to be released in the next few days. The Catalogue and Publications Advice are available from any ABS office.

Symbols and other usages

- n.a. not available
- .. not applicable
- nil or rounded down to zero

26. Where figures have been rounded, discrepancies may occur between sums of the component items and totals.

Electronic services

VIATEL. Key *656# for selected current economic, social and demographic statistics.

AUSSTATS. Thousands of up-to-date time series are available on this ABS on-line service through CSIRONET.

For further information phone the AUSSTATS Help Desk on (062) 52 6017.

TELESTATS. This service provides foreign trade statistics tailored to users' requirements.

Further information is available on (062) 52 5404.

IAN CASTLES
Australian Statistician

**TABLE 1. HOTELS AND MOTELS ETC., WITH FACILITIES
NEW SOUTH WALES**

	Licensed hotels with facilities	Motels, etc.	Total						
			Star grading					Ungraded	Total
			1	2	3	4	5		
ESTABLISHMENTS AND CAPACITY (number)									
December quarter 1986—									
Establishments	254	1,219	14	418	752	28	8	253	1,473
Guest rooms	10,005	30,043	259	7,678	20,974	3,137	3,491	4,509	40,048
Bed spaces	24,981	91,896	821	21,819	63,917	9,245	7,811	13,264	116,877
December quarter 1987—									
Establishments	244	1,282	16	413	782	54		261	1,526
Guest rooms	10,123	32,149	242	7,578	21,623	7,466		5,363	42,272
Bed spaces	25,599	99,878	797	21,636	66,358	20,049		16,637	125,477
GUEST ARRIVALS (number) AND AVERAGE LENGTH OF STAY (days)									
December quarter 1986—									
Guest arrivals	405,863	1,681,798	7,112	367,563	1,282,366	137,081	148,717	144,822	2,087,661
Average length of stay	2.3	1.7	1.7	1.7	1.7	2.6	2.7	2.0	1.8
December quarter 1987—									
Guest arrivals	398,015	1,813,801	8,148	374,187	1,313,557	334,066		181,858	2,211,816
Average length of stay	2.3	1.7	1.9	1.7	1.7	2.6		1.9	1.8
ROOM OCCUPANCY RATES (per cent)									
1986—									
October	68.4	63.4	33.9	53.8	67.5	77.6	90.3	42.0	64.7
November	69.3	58.2	26.8	47.3	62.8	79.2	94.0	39.2	61.0
December	57.9	51.6	27.0	41.7	55.1	71.1	75.2	35.4	53.2
December quarter 1986	65.2	57.7	29.2	47.6	61.8	75.9	86.4	38.8	59.6
1987—									
October	70.7	64.1	44.1	54.5	68.1	85.1		44.2	65.7
November	69.2	58.3	36.5	48.5	62.0	85.1		40.2	60.9
December	56.0	50.7	34.4	42.8	53.3	69.5		35.2	52.0
December quarter 1987	65.2	57.7	38.3	48.6	61.1	79.8		39.8	59.5
BED OCCUPANCY RATES (per cent)									
1987—									
October	42.9	38.7	25.2	35.8	40.9	49.3		26.8	39.5
November	41.2	32.7	18.4	30.4	34.7	48.2		22.7	34.5
December	35.0	31.7	18.6	28.6	33.3	42.3		21.9	32.4
December quarter 1987	39.7	34.4	20.8	31.6	36.3	46.6		23.8	35.5
TAKINGS FROM ACCOMMODATION (\$'000)									
1987—									
October	23,933	33,966	85	4,910	23,888	25,123		3,894	57,899
November	22,888	30,604	64	4,226	21,707	24,237		3,258	53,492
December	18,622	29,031	68	4,058	20,639	19,907		2,982	47,653
December quarter 1987	65,443	93,601	216	13,195	66,233	69,267		10,133	159,044

TABLE 1. HOTELS AND MOTELS ETC., WITH FACILITIES—continued
VICTORIA

	Licensed hotels with facilities	Motels, etc.	Total						
			Star grading					Ungraded	Total
			1	2	3	4	5		
ESTABLISHMENTS AND CAPACITY (number)									
December quarter 1986—									
Establishments	180	606	21	415	222	10	6	112	786
Guest rooms	5,614	15,303	336	8,155	6,936	1,682	2,181	1,627	20,917
Bed spaces	13,124	44,620	935	23,023	20,739	3,965	4,401	4,681	57,744
December quarter 1987—									
Establishments	174	642	24	411	269	15	8	89	816
Guest rooms	5,512	16,071	338	7,582	7,605	1,836	2,587	1,635	21,583
Bed spaces	12,976	47,280	868	21,881	22,754	4,857	5,225	4,671	60,256
GUEST ARRIVALS (number) AND AVERAGE LENGTH OF STAY (days)									
December quarter 1986—									
Guest arrivals	211,880	762,867	10,790	375,966	393,768	67,123	85,151	41,949	974,747
Average length of stay	2.1	1.7	1.5	1.7	1.7	2.3	2.3	1.9	1.8
December quarter 1987—									
Guest arrivals	226,150	793,105	5,683	353,234	417,933	90,635	117,736	34,034	1,019,255
Average length of stay	2.0	1.7	1.7	1.6	1.7	1.9	2.3	2.5	1.8
ROOM OCCUPANCY RATES (per cent)									
1986—									
October	58.7	57.7	35.6	53.0	64.1	69.3	65.0	35.1	58.0
November	65.7	60.9	31.2	53.4	67.9	80.4	79.8	40.3	62.2
December	50.8	46.3	29.3	41.9	51.9	56.8	58.5	32.9	47.5
December quarter 1986	58.3	54.9	32.0	49.4	61.2	68.7	67.6	36.1	55.8
1987—									
October	64.2	59.3	21.5	52.0	64.2	73.0	80.8	39.9	60.6
November	67.6	58.8	20.3	49.5	63.6	79.6	88.3	43.3	61.6
December	50.0	45.9	21.9	40.4	49.1	60.7	59.1	35.5	47.0
December quarter 1987	60.5	54.7	21.2	47.3	58.9	71.0	75.9	39.5	56.2
BED OCCUPANCY RATES (per cent)									
1987—									
October	41.5	34.8	12.0	32.2	36.6	38.4	59.0	26.5	36.2
November	43.3	34.1	11.9	30.7	35.6	41.3	64.9	28.6	36.1
December	33.3	28.4	13.0	25.8	29.6	35.4	44.2	25.1	29.4
December quarter 1987	39.3	32.4	12.3	29.6	33.9	38.3	55.9	26.7	33.9
TAKINGS FROM ACCOMMODATION (\$'000)									
1987—									
October	10,496	14,454	50	4,788	7,673	3,371	8,468	602	24,951
November	11,460	14,387	53	4,478	7,647	3,705	9,339	626	25,847
December	7,778	11,607	56	3,748	6,081	2,766	5,983	750	19,385
December quarter 1987	29,735	40,448	158	13,014	21,401	9,841	23,790	1,978	70,183

TABLE 1. HOTELS AND MOTELS ETC., WITH FACILITIES—continued
QUEENSLAND

	Licensed hotels with facilities	Motels, etc.	Total						
			Star grading					Ungraded	Total
			1	2	3	4	5		
ESTABLISHMENTS AND CAPACITY (number)									
December quarter 1986—									
Establishments	258	724	46	460	226	22	7	221	982
Guest rooms	10,358	17,529	550	7,994	7,409	3,361	2,699	5,874	27,887
Bed spaces	29,325	53,763	1,499	23,384	22,595	9,748	8,250	17,612	83,088
December quarter 1987—									
Establishments	266	785	44	476	254	25	11	241	1,051
Guest rooms	11,349	19,269	498	8,001	8,386	3,278	3,895	6,560	30,618
Bed spaces	32,064	60,645	1,348	23,834	25,610	9,335	11,509	21,073	92,709
GUEST ARRIVALS (number) AND AVERAGE LENGTH OF STAY (days)									
December quarter 1986—									
Guest arrivals	307,266	792,455	20,028	361,045	354,381	103,922	77,112	183,233	1,099,721
Average length of stay	2.6	2.1	1.7	1.9	1.9	3.1	2.5	3.1	2.3
December quarter 1987—									
Guest arrivals	372,340	841,198	15,948	360,285	385,519	132,822	121,059	197,905	1,213,538
Average length of stay	2.6	2.4	1.8	1.8	2.1	2.6	2.9	3.9	2.4
ROOM OCCUPANCY RATES (per cent)									
1986—									
October	56.1	60.2	45.1	55.0	61.1	62.2	62.3	58.9	58.8
November	54.5	56.2	38.7	49.9	57.1	64.6	62.4	54.9	55.6
December	45.1	50.7	35.1	47.1	51.2	50.4	44.6	49.7	48.7
December quarter 1986	41.8	55.7	39.6	50.7	56.5	59.0	55.7	54.5	54.3
1987—									
October	62.2	63.2	40.1	54.4	62.9	74.2	66.0	67.4	62.8
November	55.5	55.4	32.1	47.8	54.6	67.4	60.2	58.7	55.4
December	49.0	51.8	30.6	45.8	51.2	56.0	53.1	53.6	50.7
December quarter 1987	55.5	56.8	34.3	49.4	56.2	65.9	59.6	59.9	56.3
BED OCCUPANCY RATES (per cent)									
1987—									
October	37.7	39.4	27.3	33.3	37.8	44.6	37.4	45.2	38.8
November	32.3	32.7	20.4	27.8	31.2	39.1	32.9	37.4	32.6
December	31.0	35.0	23.2	29.9	34.1	36.1	31.5	37.9	33.6
December quarter 1987	33.6	35.7	23.6	30.3	34.4	39.9	33.9	40.2	35.0
TAKINGS FROM ACCOMMODATION (\$'000)									
1987—									
October	17,706	18,332	196	4,990	8,036	5,370	6,502	10,943	36,038
November	15,639	15,155	140	4,070	6,495	4,726	6,084	9,279	30,794
December	15,006	15,365	145	4,306	6,696	4,129	6,156	8,939	30,370
December quarter 1987	48,351	48,851	482	13,365	21,227	14,225	18,743	29,161	97,202

TABLE 1. HOTELS AND MOTELS ETC., WITH FACILITIES—continued
SOUTH AUSTRALIA

	Licensed hotels with facilities	Motels, etc.	Total						Total
			Star grading					Ungraded	
			1	2	3	4	5		
ESTABLISHMENTS AND CAPACITY (number)									
December quarter 1986—									
Establishments	115	196	14	107	140	10	40	311	
Guest rooms	3,316	5,070	290	1,989	4,391	869	847	8,386	
Bed spaces	8,177	15,543	693	5,377	12,884	2,377	2,389	23,720	
December quarter 1987—									
Establishments	124	213	16	119	137	7	58	337	
Guest rooms	3,440	5,437	294	2,369	4,395	718	1,101	8,877	
Bed spaces	8,604	16,644	694	6,457	12,964	1,945	3,188	25,248	
GUEST ARRIVALS (number) AND AVERAGE LENGTH OF STAY (days)									
December quarter 1986—									
Guest arrivals	120,654	262,771	10,888	81,938	215,479	44,768	30,352	383,425	
Average length of stay	2.0	1.8	1.4	1.8	1.9	2.0	2.1	1.9	
December quarter 1987—									
Guest arrivals	121,782	257,829	10,444	94,563	199,709	32,977	41,918	379,611	
Average length of stay	2.0	1.9	1.3	1.8	2.0	2.1	1.9	1.9	
ROOM OCCUPANCY RATES (per cent)									
1986—									
October	62.3	67.1	47.0	54.2	68.6	86.1	58.3	65.2	
November	53.8	57.5	32.1	41.8	59.6	83.4	51.0	56.0	
December	42.6	47.5	25.2	37.2	48.8	62.4	38.6	45.6	
December quarter 1986	52.9	57.4	34.8	44.4	59.0	78.1	49.3	55.6	
1987—									
October	55.8	60.6	39.2	49.6	62.6	86.0	50.2	58.7	
November	53.2	56.3	29.7	44.6	60.0	83.1	46.4	55.1	
December	38.0	44.8	24.9	35.9	45.9	58.8	34.6	42.2	
December quarter 1987	49.0	53.9	31.3	43.4	56.1	75.9	43.7	52.0	
BED OCCUPANCY RATES (per cent)									
1987—									
October	35.5	36.1	27.8	32.7	37.9	43.3	31.1	35.9	
November	31.4	31.8	19.5	27.6	33.8	42.8	26.7	31.6	
December	23.9	28.0	17.5	24.2	29.0	29.7	21.9	26.6	
December quarter 1987	30.3	32.0	21.6	28.2	33.6	38.6	26.6	31.4	
TAKINGS FROM ACCOMMODATION (\$'000)									
1987—									
October	3,490	4,984	116	1,327	4,364	1,774	894	8,475	
November	3,550	4,833	87	1,189	4,386	1,844	877	8,383	
December	2,348	3,707	76	1,001	3,216	1,159	601	6,055	
December quarter 1987	9,387	13,525	279	3,517	11,966	4,778	2,372	22,912	

TABLE 1. HOTELS AND MOTELS ETC., WITH FACILITIES—continued
WESTERN AUSTRALIA

	Licensed hotels with facilities	Motels, etc.	Total						Total
			Star grading					Ungraded	
			1	2	3	4	5		
ESTABLISHMENTS AND CAPACITY (number)									
December quarter 1986—									
Establishments	165	132	36	53	77	15	116	297	
Guest rooms	6,875	5,436	806	1,381	3,777	2,826	3,521	12,311	
Bed spaces	15,322	14,529	1,783	3,394	10,022	6,011	8,641	29,851	
December quarter 1987—									
Establishments	170	141	36	54	77	17	127	311	
Guest rooms	7,752	5,642	842	1,427	3,808	3,237	4,080	13,394	
Bed spaces	17,625	15,380	1,865	3,632	10,189	6,937	10,382	33,005	
GUEST ARRIVALS (number) AND AVERAGE LENGTH OF STAY (days)									
December quarter 1986—									
Guest arrivals	187,272	184,535	27,813	43,892	135,691	68,966	95,445	371,807	
Average length of stay	2.5	2.4	1.7	2.0	2.3	3.3	2.4	2.4	
December quarter 1987—									
Guest arrivals	233,332	208,398	30,955	50,634	138,439	101,828	119,874	441,730	
Average length of stay	2.3	2.3	1.6	1.8	2.2	2.6	2.5	2.3	
ROOM OCCUPANCY RATES (per cent)									
1986—									
October	55.1	58.5	48.0	51.8	61.5	60.8	46.4	56.6	
November	49.3	48.4	38.2	42.0	51.7	63.1	39.6	48.9	
December	45.0	44.6	32.7	38.3	48.8	55.3	37.6	44.9	
December quarter 1986	49.7	50.5	39.6	44.0	54.0	60.3	41.2	50.1	
1987—									
October	54.0	60.2	49.7	51.3	59.3	64.9	50.8	56.6	
November	47.9	47.1	39.2	44.5	46.6	56.8	43.9	47.6	
December	45.2	45.2	34.9	38.9	45.9	54.5	41.5	45.2	
December quarter 1987	49.1	50.9	41.3	44.9	50.7	58.8	45.4	49.8	
BED OCCUPANCY RATES (per cent)									
1987—									
October	36.3	40.9	35.5	32.4	39.4	44.4	36.2	38.5	
November	30.9	29.3	26.0	25.9	28.5	37.7	29.0	30.2	
December	32.3	31.4	26.6	25.6	31.4	40.4	29.9	31.9	
December quarter 1987	33.2	33.9	29.4	28.0	33.1	40.9	31.7	33.5	
TAKINGS FROM ACCOMMODATION (\$' 000)									
1987—									
October	7,738	4,988	510	939	3,388	5,169	2,719	12,726	
November	6,258	3,716	375	747	2,513	4,125	2,214	9,974	
December	6,191	3,784	362	701	2,593	4,036	2,283	9,975	
December quarter 1987	20,186	12,488	1,247	2,388	8,494	13,330	7,216	32,674	

TABLE 1. HOTELS AND MOTELS ETC., WITH FACILITIES—continued
TASMANIA

	Licensed hotels with facilities	Motels, etc.	Total					Total
			Star grading					
			1	2	3	4	5 Ungraded	
ESTABLISHMENTS AND CAPACITY (number)								
December quarter 1986—								
Establishments	90	69	68	43	6	42	159	
Guest rooms	2,837	1,494	1,370	1,782	671	508	4,331	
Bed spaces	7,670	4,650	3,472	5,625	1,751	1,472	12,320	
December quarter 1987—								
Establishments	88	66	68	42	7	37	154	
Guest rooms	3,063	1,464	1,447	1,710	904	466	4,527	
Bed spaces	8,117	4,460	3,766	5,184	2,379	1,248	12,577	
GUEST ARRIVALS (number) AND AVERAGE LENGTH OF STAY (days)								
December quarter 1986—								
Guest arrivals	145,656	89,141	59,409	113,985	37,373	24,030	234,797	
Average length of stay	1.5	1.5	1.4	1.4	1.7	1.6	1.5	
December quarter 1987—								
Guest arrivals	140,249	89,180	59,416	101,865	48,298	19,850	229,429	
Average length of stay	1.6	1.5	1.6	1.5	1.6	1.7	1.6	
ROOM OCCUPANCY RATES (per cent)								
1986—								
October	54.8	55.3	42.5	57.9	74.4	47.0	54.9	
November	60.0	56.5	44.3	64.9	78.3	47.5	58.8	
December	45.0	45.8	35.1	46.3	61.7	45.3	45.3	
December quarter 1986	53.2	52.5	40.6	56.3	71.4	46.6	52.9	
1987—								
October	51.5	57.2	44.4	59.4	59.1	47.5	53.3	
November	54.7	56.0	44.1	60.1	69.2	44.0	55.1	
December	43.6	45.6	38.0	46.2	54.1	37.6	44.3	
December quarter 1987	49.9	52.9	42.1	55.2	60.7	43.0	50.9	
BED OCCUPANCY RATES (per cent)								
1987—								
October	32.4	35.0	28.4	35.9	35.7	32.6	33.3	
November	32.6	31.8	26.7	34.1	39.3	28.4	32.3	
December	26.9	27.9	24.7	27.3	31.9	25.6	27.2	
December quarter 1987	30.6	31.6	26.6	32.4	35.6	28.9	30.9	
TAKINGS FROM ACCOMMODATION (\$'000)								
1987—								
October	2,648	1,236	778	1,571	1,280	255	3,884	
November	2,830	1,175	752	1,588	1,444	223	4,006	
December	2,404	1,011	695	1,268	1,248	203	3,415	
December quarter 1987	7,882	3,422	2,224	4,427	3,971	681	11,304	

**TABLE 1. HOTELS AND MOTELS ETC., WITH FACILITIES—continued
NORTHERN TERRITORY**

	Licensed hotels with facilities	Motels, etc.	Total						Total
			Star grading					Ungraded	
			1	2	3	4	5		
ESTABLISHMENTS AND CAPACITY (number)									
December quarter 1986—									
Establishments	35	39	6	29	15	7	—	17	74
Guest rooms	1,720	2,090	174	981	908	1,260	..	487	3,810
Bed spaces	4,557	5,870	412	2,752	2,559	3,424	..	1,280	10,427
December quarter 1987—									
Establishments	37	42	6	29	15	7	—	22	79
Guest rooms	2,121	2,170	183	1,064	945	1,240	..	859	4,291
Bed spaces	5,858	6,164	467	2,920	2,549	3,507	..	2,579	12,022
GUEST ARRIVALS (number) AND AVERAGE LENGTH OF STAY (days)									
December quarter 1986—									
Guest arrivals	63,972	83,001	7,089	33,254	48,793	47,287	..	10,550	146,973
Average length of stay	1.7	1.6	1.2	1.7	1.5	1.7	..	1.9	1.6
December quarter 1987—									
Guest arrivals	79,643	76,289	6,982	33,771	42,209	51,045	..	21,925	155,932
Average length of stay	1.8	1.9	1.3	1.7	1.8	1.9	..	2.2	1.9
ROOM OCCUPANCY RATES (per cent)									
1986—									
October	48.2	53.2	42.2	48.4	61.1	51.5	..	38.7	50.9
November	42.3	44.9	31.1	38.1	52.6	49.8	..	27.2	43.7
December	32.4	34.1	24.1	29.3	36.0	40.6	..	20.9	33.3
December quarter 1986	41.0	44.0	32.5	38.6	49.9	47.3	..	29.0	42.6
1987—									
October	54.1	52.9	37.4	47.1	59.4	65.1	..	41.5	53.5
November	49.2	40.6	32.8	34.4	49.0	59.6	..	34.5	44.9
December	38.9	32.1	28.1	26.1	37.9	48.8	..	26.5	35.4
December quarter 1987	47.4	41.9	32.7	35.9	48.8	57.8	..	34.2	44.6
BED OCCUPANCY RATES (per cent)									
1987—									
October	31.3	32.4	24.0	29.0	38.4	35.6	..	25.1	31.9
November	26.5	24.4	20.7	20.2	31.5	30.5	..	19.5	25.5
December	22.2	20.2	19.4	15.6	25.5	26.4	..	16.5	21.2
December quarter 1987	26.7	25.7	21.4	21.6	31.8	30.8	..	20.4	26.2
TAKINGS FROM ACCOMMODATION (\$' 000)									
1987—									
October	2,834	1,963	68	763	1,094	2,288	..	585	4,798
November	2,303	1,434	53	517	815	1,906	..	447	3,738
December	1,922	1,156	52	393	667	1,630	..	337	3,078
December quarter 1987	7,059	4,554	172	1,673	2,576	5,824	..	1,369	11,613

TABLE 1. HOTELS AND MOTELS ETC., WITH FACILITIES—continued
AUSTRALIAN CAPITAL TERRITORY

	Licensed hotels with facilities	Motels, etc.	Total					Total
			Star grading					
			1	2	3	4	5 Ungraded	
ESTABLISHMENTS AND CAPACITY (number)								
December quarter 1986—								
Establishments	11	30	9	23	6	3	41	
Guest rooms	690	1,701	391	1,277	632	91	2,391	
Bed spaces	1,709	5,076	1,362	3,582	1,475	366	6,785	
December quarter 1987—								
Establishments	9	28	7	22	8	—	37	
Guest rooms	748	1,790	354	1,348	836	..	2,538	
Bed spaces	1,778	5,608	1,358	3,759	2,269	..	7,386	
GUEST ARRIVALS (number) AND AVERAGE LENGTH OF STAY (days)								
December quarter 1986—								
Guest arrivals	28,327	79,342	17,099	59,627	26,106	4,837	107,669	
Average length of stay	1.9	2.4	3.0	2.1	2.3	2.4	2.3	
December quarter 1987—								
Guest arrivals	40,150	85,817	22,242	69,062	34,663	—	125,967	
Average length of stay	1.7	2.4	2.3	2.1	2.2	..	2.2	
ROOM OCCUPANCY RATES (per cent)								
1986—								
October	60.1	76.7	70.1	72.3	74.3	56.7	71.9	
November	63.4	67.5	62.4	65.3	73.5	47.1	66.3	
December	46.2	56.3	50.4	53.8	56.8	35.6	53.4	
December quarter 1986	56.5	66.8	61.0	63.8	68.2	46.4	63.8	
1987—								
October	72.8	72.5	74.1	74.4	69.2	..	72.6	
November	76.3	75.0	74.5	78.6	70.6	..	75.4	
December	48.3	55.0	48.7	54.8	52.0	..	53.0	
December quarter 1987	65.7	67.4	65.7	69.1	63.9	..	66.9	
BED OCCUPANCY RATES (per cent)								
1987—								
October	47.3	44.5	45.8	45.4	44.4	..	45.1	
November	47.6	41.7	47.1	45.2	37.4	..	43.1	
December	31.6	32.0	29.1	34.5	29.3	..	31.9	
December quarter 1987	42.1	39.4	40.6	41.7	37.0	..	40.0	
TAKINGS FROM ACCOMMODATION (\$' 000)								
1987—								
October	1,261	2,546	321	1,891	1,596	..	3,807	
November	1,240	2,482	322	1,887	1,513	..	3,721	
December	774	1,968	248	1,352	1,143	..	2,742	
December quarter 1987	3,274	6,996	890	5,130	4,250	..	10,270	

TABLE 1. HOTELS AND MOTELS ETC., WITH FACILITIES—continued
AUSTRALIA

	Licensed hotels with facilities	Motels, etc.	Total						
			Star grading					Ungraded	Total
			1	2	3	4	5		
ESTABLISHMENTS AND CAPACITY (number)									
December quarter 1986—									
Establishments	1,108	3,015	139	1,557	1,498	94	31	804	4,123
Guest rooms	41,415	78,666	2,434	29,920	47,454	11,525	11,284	17,464	120,081
Bed spaces	104,865	235,947	6,181	84,545	141,923	31,750	26,708	49,705	340,812
December quarter 1987—									
Establishments	1,112	3,199	144	1,575	1,598	119	40	835	4,311
Guest rooms	44,108	83,992	2,416	29,803	49,820	12,648	13,349	20,064	128,100
Bed spaces	112,621	256,059	6,077	85,446	149,367	35,850	32,162	59,778	368,680
GUEST ARRIVALS (number) AND AVERAGE LENGTH OF STAY (days)									
December quarter 1986—									
Guest arrivals	1,470,890	3,935,910	84,396	1,339,490	2,604,090	440,878	402,728	535,218	5,406,800
Average length of stay	2.2	1.8	1.6	1.8	1.8	2.6	2.5	2.4	1.9
December quarter 1987—									
Guest arrivals	1,611,661	4,165,617	78,865	1,347,627	2,668,293	564,762	500,367	617,364	5,777,278
Average length of stay	2.2	1.9	1.6	1.7	1.8	2.3	2.6	2.7	2.0
ROOM OCCUPANCY RATES (per cent)									
1986—									
October	59.5	61.4	43.8	53.4	65.3	68.6	74.7	49.2	60.7
November	58.7	57.4	35.1	48.8	61.4	70.9	77.2	45.3	57.8
December	48.2	49.2	30.8	42.2	52.2	57.4	59.9	40.6	48.8
December quarter 1986	55.4	55.9	36.5	48.1	59.6	65.6	70.4	45.0	55.8
1987—									
October	61.5	62.3	41.4	52.8	65.2	74.3	75.4	53.4	62.0
November	58.6	56.7	33.3	47.5	59.8	71.5	75.0	47.6	57.4
December	48.3	48.8	30.6	41.5	50.6	59.1	59.8	42.3	48.6
December quarter 1987	56.1	55.9	35.1	47.3	58.5	68.2	70.0	47.7	56.0
BED OCCUPANCY RATES (per cent)									
1987—									
October	38.3	38.0	27.4	33.4	39.3	42.5	47.3	35.4	38.1
November	35.2	32.7	20.6	29.1	33.9	38.8	46.4	29.7	33.5
December	31.1	31.3	21.3	27.2	32.1	35.3	39.1	29.2	31.2
December quarter 1987	34.9	34.0	23.2	29.9	35.1	38.9	44.2	31.4	34.3
TAKINGS FROM ACCOMMODATION (\$' 000)									
1987—									
October	70,107	82,470	1,030	18,809	51,905	23,877	37,064	19,892	152,577
November	66,168	73,786	776	16,296	47,037	22,692	36,229	16,923	139,954
December	55,043	67,629	765	15,144	42,512	19,289	28,868	16,095	122,672
December quarter 1987	191,318	223,886	2,571	50,249	141,455	65,858	102,161	52,910	415,203

TABLE 2. CARAVAN PARKS

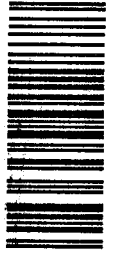
	New South Wales(a)			Victoria			Queensland			South Australia		
	Short term	Long term	Total	Short term	Long term	Total	Short term	Long term	Total	Short term	Long term	Total
	ESTABLISHMENTS AND CAPACITY (number)											
December quarter 1986 —												
Establishments	589	230	819	497	63	560	314	298	612	178	16	194
Powered sites	52,563	17,793	70,356	42,428	4,759	47,187	16,470	20,668	37,138	13,920	1,117	15,037
Unpowered sites	23,578	3,774	27,352	14,658	1,174	15,832	9,442	4,661	14,103	5,851	228	6,079
Cabins, flats, etc.	1,404	252	1,656	1,279	45	1,324	821	619	1,440	695	61	756
<i>Total capacity</i>	77,545	21,819	99,364	58,365	5,978	64,343	26,733	25,948	52,681	20,466	1,406	21,872
December quarter 1987 —												
Establishments	527	302	829	517	66	583	304	326	630	163	34	197
Powered sites	48,139	23,491	71,630	44,104	4,865	48,969	15,607	22,422	38,029	12,854	2,377	15,231
Unpowered sites	19,686	4,471	24,157	14,830	1,227	16,057	9,577	4,717	14,294	5,328	649	5,977
Cabins, flats, etc.	1,465	387	1,852	1,517	61	1,578	902	849	1,751	711	134	845
<i>Total capacity</i>	69,290	28,349	97,639	60,451	6,153	66,604	26,086	27,988	54,074	18,893	3,160	22,053
SITE OCCUPANCY RATES (per cent)												
1986 —												
October	21.9	48.1	27.6	13.9	45.0	16.9	16.9	51.9	41.3	18.5	53.4	20.7
November	20.7	47.2	26.5	16.4	48.2	19.3	26.8	51.5	39.0	14.2	51.3	16.6
December	36.2	51.7	39.6	26.3	47.4	28.2	38.1	51.4	44.7	20.2	53.1	22.3
December quarter 1986	26.3	49.0	31.3	18.9	46.8	21.5	32.0	51.6	41.7	17.7	52.6	19.9
1987 —												
October	23.9	46.4	30.4	15.9	50.9	19.1	32.1	53.2	43.0	18.8	41.5	22.0
November	20.7	45.9	28.0	16.7	52.0	20.0	28.4	52.4	40.8	14.0	40.7	17.9
December	37.1	50.7	41.0	26.5	53.7	29.0	38.8	52.6	46.0	19.1	41.5	22.3
December quarter 1987	27.3	47.7	33.2	19.8	52.2	22.8	33.2	52.7	43.3	17.3	41.3	20.8
TAKINGS FROM ACCOMMODATION (\$'000)												
1987 —												
October	5,433	3,065	8,498	3,093	585	3,678	2,177	3,166	5,343	1,181	272	1,454
November	4,559	2,861	7,420	3,187	613	3,800	1,807	2,995	4,802	850	261	1,111
December	8,893	3,529	12,422	4,348	670	5,018	2,600	3,233	5,833	1,323	290	1,613
December quarter 1987	18,885	9,454	28,339	10,628	1,868	12,496	6,584	9,393	15,978	3,354	823	4,177
NUMBER OF SITES OCCUPIED BY LONG TERM RESIDENTS												
At end of —												
December quarter 1987	4,216	11,239	15,455	3,736	2,402	6,138	3,156	12,289	15,445	625	1,034	1,659

(a) Includes Australian Capital Territory.

TABLE 2. CARAVAN PARKS — continued

	Western Australia			Tasmania			Northern Territory			Australia		
	Short term	Long term	Total	Short term	Long term	Total	Short term	Long term	Total	Short term	Long term	Total
ESTABLISHMENTS AND CAPACITY (number)												
December quarter 1986 —												
Establishments	235	44	279	70	—	70	32	24	56	1,915	675	2,590
Powered sites	14,613	3,165	17,778	3,484	..	3,484	1,228	1,971	3,199	144,706	49,473	194,179
Unpowered sites	3,837	542	4,379	2,282	..	2,282	3,356	597	3,953	63,004	10,976	73,980
Cabins, flats, etc.	536	58	594	126	..	126	273	54	327	5,134	1,089	6,223
<i>Total capacity</i>	18,986	3,765	22,751	5,892	..	5,892	4,857	2,622	7,479	212,844	61,538	274,382
December quarter 1987 —												
Establishments	238	46	284	70	..	70	32	24	56	1,850	799	2,649
Powered sites	14,988	3,405	18,393	3,348	..	3,348	1,282	2,083	3,365	140,292	58,673	198,965
Unpowered sites	4,196	566	4,762	2,306	..	2,306	3,557	1,119	4,676	59,470	12,759	72,229
Cabins, flats, etc.	534	58	592	149	..	149	288	67	355	5,566	1,556	7,122
<i>Total capacity</i>	19,718	4,029	23,747	5,803	..	5,803	5,127	3,269	8,396	205,328	72,988	278,316
SITE OCCUPANCY RATES (per cent)												
1986 —												
October	26.9	60.9	32.6	16.8	..	16.8	13.6	50.8	26.7	20.7	50.4	27.4
November	25.0	60.7	30.9	18.4	..	18.4	10.2	46.0	22.7	19.7	50.0	26.6
December	30.8	61.8	36.0	24.8	..	24.8	8.1	42.9	20.5	30.8	51.4	35.4
December quarter 1986	27.6	61.1	33.2	20.0	..	20.0	10.6	46.6	23.3	23.8	50.6	29.8
1987 —												
October	29.9	59.7	35.0	16.4	..	16.4	15.4	38.0	24.2	22.3	49.5	29.5
November	24.2	58.6	30.1	16.9	..	16.9	10.2	32.6	18.9	19.9	48.8	27.5
December	29.6	59.6	34.7	23.8	..	23.8	8.0	27.4	15.6	30.7	50.7	36.0
December quarter 1987	27.9	59.3	33.3	19.1	..	19.1	11.2	32.7	19.6	24.4	49.7	31.0
TAKINGS FROM ACCOMMODATION (\$'000)												
1987 —												
October	1,493	549	2,042	266	..	266	227	331	558	13,870	7,968	21,838
November	1,183	523	1,706	255	..	255	154	271	425	11,995	7,524	19,519
December	1,618	558	2,176	368	..	368	127	224	351	19,277	8,504	27,781
December quarter 1987	4,295	1,629	5,924	890	..	890	508	826	1,334	45,141	23,997	69,138
NUMBER OF SITES OCCUPIED BY LONG TERM RESIDENTS												
At end of —												
December quarter 1987	2,536	1,958	4,494	353	..	353	181	791	972	14,799	29,717	44,516

Printed by R.D. RUBIE, Commonwealth Government Printer, Canberra
(c) Commonwealth of Australia 1988



2086350012878

ISSN 1031-0770

Recommended retail price: \$5.00